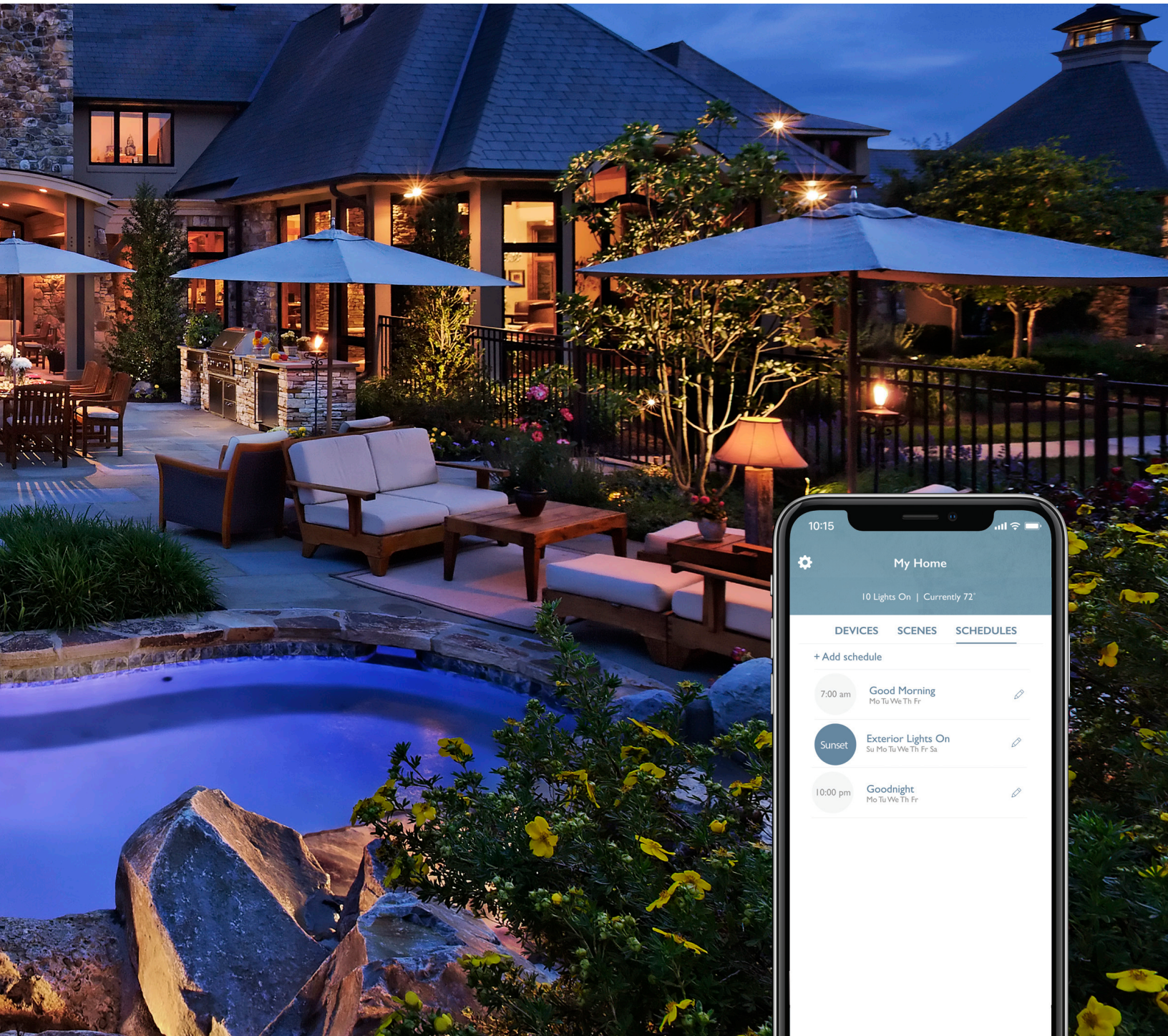


# Lutron smart landscape lighting control solutions

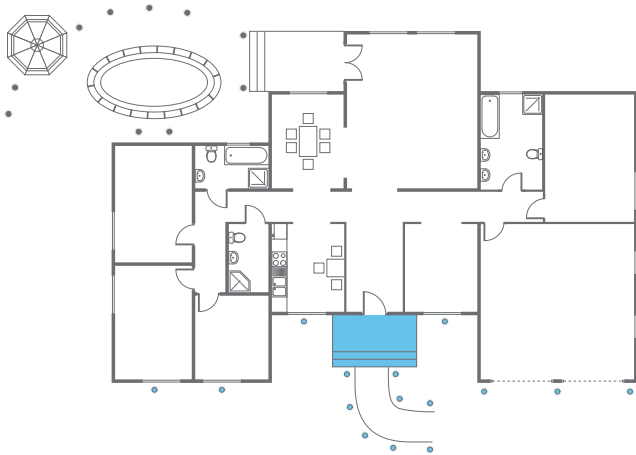


**RA2** select  
by LUTRON

# Suggested smart landscape lighting control solutions

Discover the power of smart landscape lighting control with Lutron. Getting started is easy! Choose from one of three RA2 Select solutions—you can mix, match, add, and remove devices to create the perfect smart solution for your landscape lighting.

## Welcome Home



### Controls 4 zones of light

#### 4 Switches

Ideal for porch, garage, landscape, and walkway lights to provide a welcoming atmosphere

#### 2 Pico remotes with wall-mounting kit

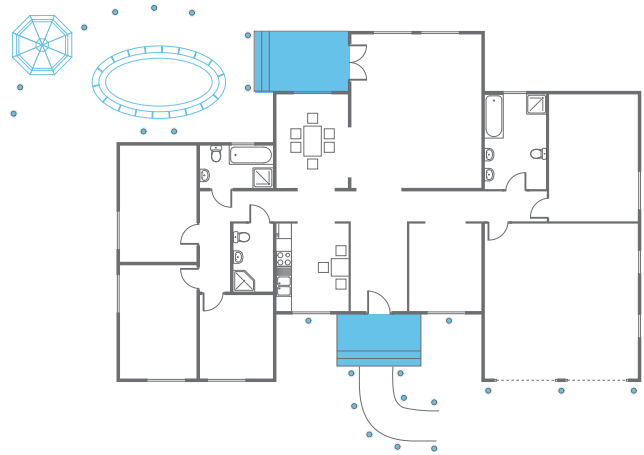
Add another point of lighting control wherever you want — no cutting holes or wiring necessary

#### 1 RA2 Select main repeater

Provides the ability to control lights and schedule timers from the Lutron App



## Backyard Entertaining



### Controls 9 zones of light

#### 7 Switches

Add backyard lighting—ideal for pool, landscaping, and walkway lights

#### 2 Dimmers

Add lighting control to outdoor living spaces, such as patios and pergolas, to create a comfortable environment for you and your guests

#### 2 Pico remotes remotes with wall-mounting kit

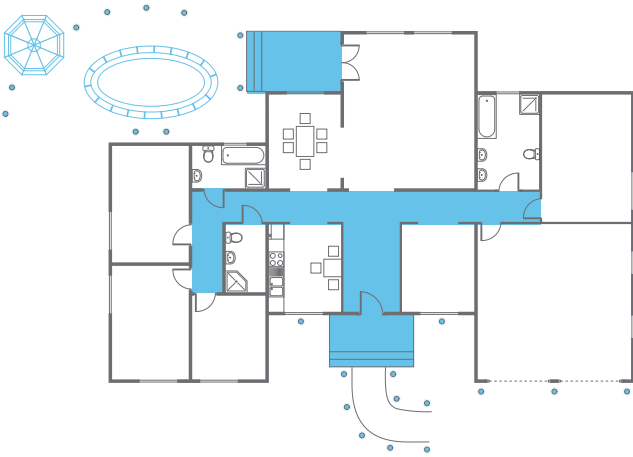
Add another point of lighting control wherever you want — no cutting holes or wiring necessary

#### 1 RA2 Select main repeater

Provides the ability to control lights and schedule timers from the Lutron App



## Safe Entry



**Controls 11 zones of light, including one 3-way application**

**7 Switches**

Ideal for exterior lights

**4 Dimmers**

Add foyer and hallway lights for safe entrance into the interior of the home

**2 Pico remotes remotes with wall-mounting kit**

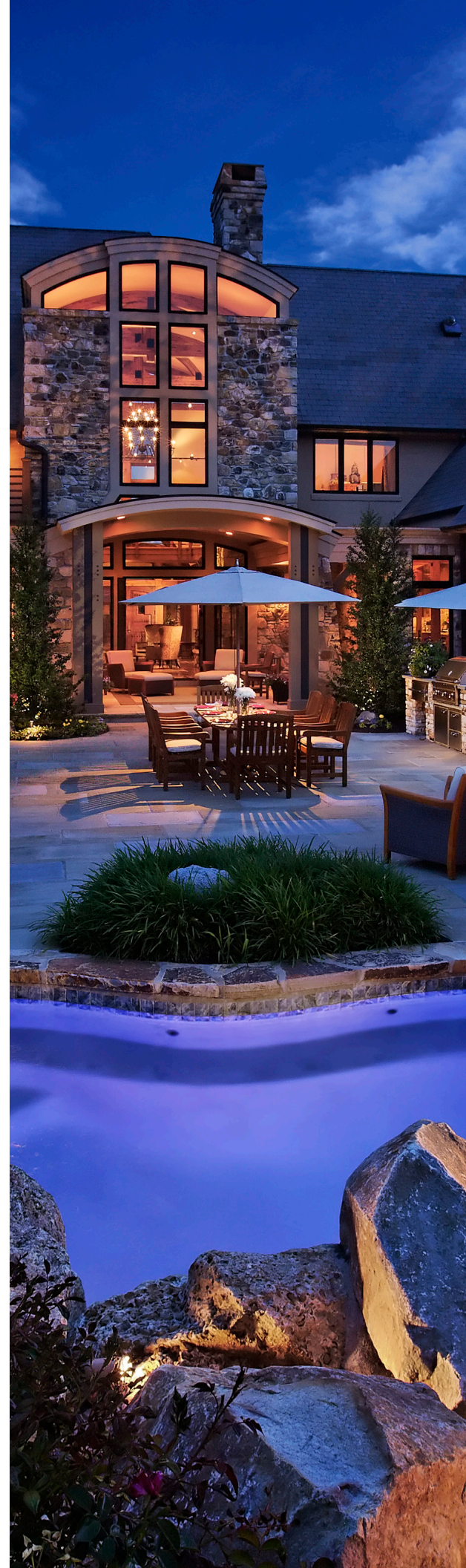
Add another point of lighting control wherever you want — no cutting holes or wiring necessary

**2 Remote dimmers**

Used for multi-location dimming in foyer and hallway

**1 RA2 Select main repeater**

Provides the ability to control lights and schedule timers from the Lutron App





[lutron.com/RA2Select](https://lutron.com/RA2Select) | 1.844.LUTRON1 (588.7661) — includes 24/7 technical support

The Lutron logo, the RA2 Select logo, Lutron, and RA2 Select are trademarks or registered trademarks of Lutron Electronics Co., Inc., in the U.S. and/or other countries.



© 02/2020 Lutron Electronics Co., Inc. | P/N 368-5656 REV A