

peerless-AV[®]

DesignerSeries[™]
Wall Mounts



DesignerSeries™ Ultra Slim Wall Mounts

If you're looking for a mount that is ultra slim, sleek, easy to install and adjust to effortlessly find the perfect viewing angle, look no further - Peerless-AV® has created it. The DesignerSeries™ wall mounts are some of the thinnest wall mounts on the market and offer the most versatile features and mounting options that benefit both the installer and end-user.

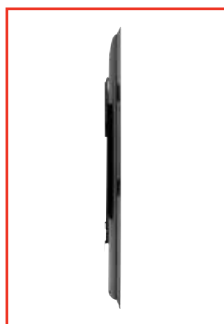


Key Features and Benefits



Tool-Less Wall Plate Covers

Hide all hardware
for a clean,
finished look



Ultra-Low Profile Design

Positions display close
to the wall for a sleek
mounting installation



Post-Installation Leveling

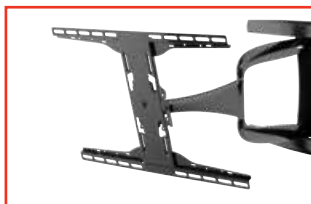
±1/2" of post-installation
leveling is included with Tilting
and Articulating Mounts

This series of mounts has passed the approval process for Underwriters Laboratories (UL), promoting safe living and working environments by the application of safety science and hazard-based safety engineering. DesignerSeries™ mounts have been submitted to rigorous safety testing, including tests for strength and “pull out” to a minimum of four times the stated load capacity.

Peerless-AV® mounts are also RoHS compliant, which stands for the Restriction of Hazardous Substances. Through the restriction of six hazardous materials in electrical and electronic products, Peerless-AV provides a safe environment for the consumer.



Articulating Wall Mount Models come in color packaging



I-Shaped Adaptor Plate Design

Helps avoid blocking connections on back of display



Locking Tilt

Lock the display at any angle with the ratcheting handle



Integrated Cable Management

Protects, contains and conceals cables for a clean, professional installation

DesignerSeries™

Ultra Slim Flat Wall Mounts

The DesignerSeries™ Ultra Slim Flat Wall Mounts offer a sleek, slim design, virtually disappearing behind the ultra-thin display. These mounts provide simple and secure installation, exceptional functionality, and are able to mount a wide range of display sizes.



SUF640P	SUF650P	SUF660P	SUF641
Display Size 37" to 50" Ultra-thin displays	Display Size 37" to 75" Ultra-thin displays	Display Size 40" to 80" Ultra-thin displays	Display Size 24" to 50" Ultra-thin displays
Max Load 150lb (68kg)	Max Load 150lb (68kg)	Max Load 150lb (68kg)	Max Load 150lb (68kg)
Mounting Pattern 450 x 402mm (17.73"W x 15.82"H)	Mounting Pattern 742 x 449mm (29.23"W x 17.67"H)	Mounting Pattern 825 x 449mm (32.48"W x 17.67"H)	VESA® Pattern 75 to 425mm
Distance From Wall 0.33" (8mm)	Distance From Wall 0.33" (8mm)	Distance From Wall 0.33" (8mm)	Distance From Wall 0.19" (5mm)
Metal Stud Accessory: ACC215 Security Accessory: ACC952	Metal Stud Accessory: ACC415 Security Accessory: ACC952	Metal Stud Accessory: ACC615 Security Accessory: ACC952	Security Accessory ACC952

- Ultra slim design holds the display only 0.33" (8mm) from the wall

- Lateral shift adjustment of up to 8" (203mm) (depending on the display model) for perfect display placement

- Easy three step installation process

- Ultra slim design holds displays only 0.19" (5mm) from the wall



1. SAFETY TABS
Specially designed for secure support

2. SECURE INSTALLATION
Industrial strength Velcro® latching system holds the display in place preventing accidental bump-off or unwanted horizontal adjustment

3. ULTRA SLIM DESIGN
Holds display only 0.33" (8mm) from the wall



SUF651	SUF661
Display Size 37" to 50" Ultra-thin displays	Display Size 40" to 80" Ultra-thin displays
Max Load 150lb (68kg)	Max Load 150lb (68kg)
VESA® Pattern 150 to 400 and 550 to 700mm	VESA® Pattern 150 to 400 and 550 to 800mm
Distance From Wall 0.19" (5mm)	Distance From Wall 0.19" (5mm)
Security Accessory ACC952	Security Accessory ACC952

- Locking arm holds display in place and prevents accidental bump-offs and unwanted horizontal adjustments

- Theft resistant security screw on locking arm

Accessories



IB14X9(-AC)-W
14" x 9" In-Wall Box for Recessed Power and AV Components



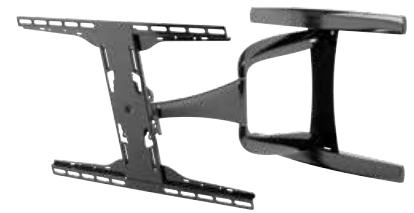
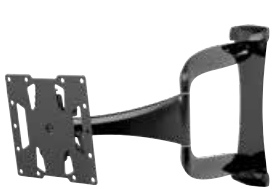
IB14X14(-AC)-W
14" x 14" In-Wall Box for Recessed Power and AV Components

Visit peerless-av.com for a complete line of accessories

DesignerSeries™

Ultra Slim Articulating Wall Mounts

The DesignerSeries™ Ultra Slim Articulating Wall Mounts are designed exclusively for ultra-thin displays. With full-motion capabilities that allow you to swivel, tilt, extend or retract the display, post installation height adjustment and One-Touch™ tilt features, viewers can effortlessly find the perfect viewing angle.



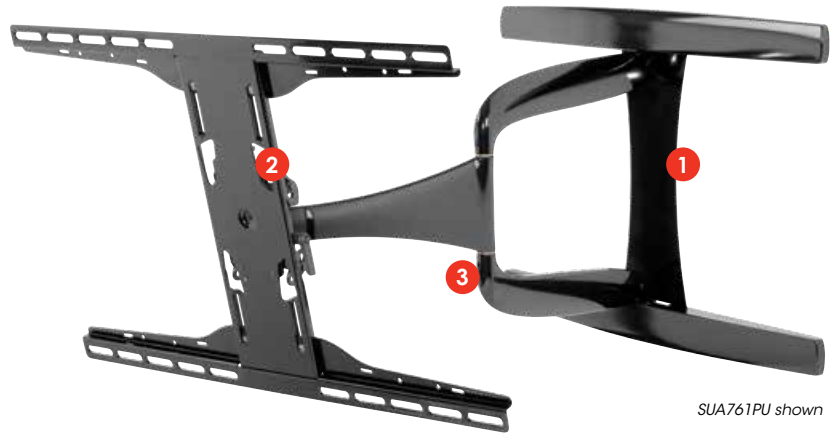
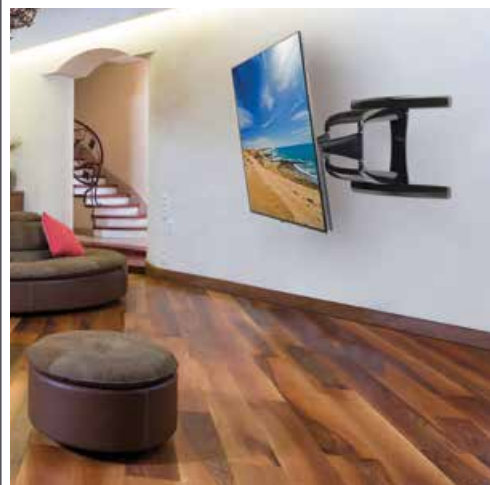
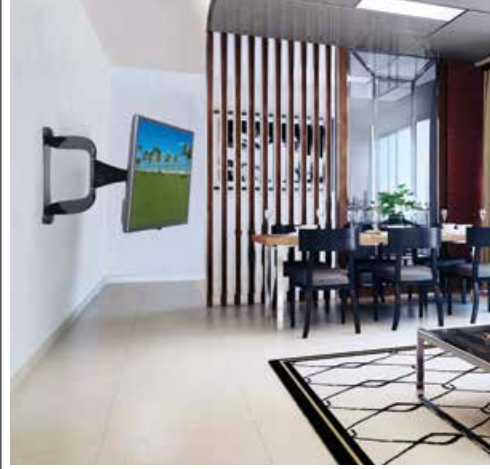
SUA740P	SUA747PU	IM747PU	SUA761PU
Display Size 32" to 43" Ultra-thin displays less than 3" (76mm) deep	Display Size 32" to 50" Ultra-thin displays less than 3" (76mm) deep	Display Size 37" to 65" Ultra-thin displays less than 3" (76mm) deep	Display Size 37" to 65" Ultra-thin displays less than 3" (76mm) deep
Max Load 60lb (27kg)	Max Load 60lb (27kg)	Max Load Articulating Mount: 80lb (36.3kg) In-Wall Box: 25lb (11.3kg)	Max Load 80lb (36kg)
VESA® Pattern 200 x 100 and 200 x 200mm	Mounting Pattern 400 x 400mm (15.75"W x 15.75"H)	Mounting Pattern 400 x 400mm (15.75"W x 15.75"H)	Mounting Pattern 600 x 400mm (23.62"W x 15.75"H)
Distance From Wall 1.74"-24.74" (44-628mm)	Distance From Wall 1.85"-24.85" (47-631mm)	Distance From Wall 1.94"-25.03" (49-636mm)	Distance From Wall 1.85"-24.85" (47-631mm)
Tilt Pivot Roll +15°/-5° ±90° ±5°	Tilt Pivot Roll +15°/-5° ±90° ±5°	Tilt Pivot Roll +15°/-5° ±90° ±5°	Tilt Pivot Roll +15°/-5° ±90° ±5°
Metal Stud Accessory: WSP756 Security Accessory: ACC919	Metal Stud Accessory: WSP756 Security Accessory: ACC919	IBMP In-wall Box Component Panel	Metal Stud Accessory: WSP756 Security Accessory: ACC925

- Full-motion capabilities allow you to swivel, tilt, extend or retract the display for the perfect viewing angle

- Up to ±90° of side-to-side swivel

- One-Touch™ tilt mechanism allows adjustment of +15°/-5° without the use of tools

- Up to ±0.5" (13mm) of vertical adjustment for post installation leveling and height adjustment fine-tuning



SUA761PU shown

1. ULTRA-LOW PROFILE DESIGN

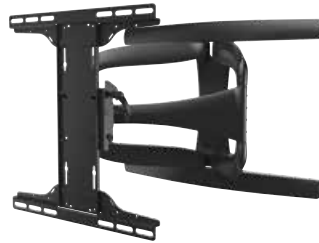
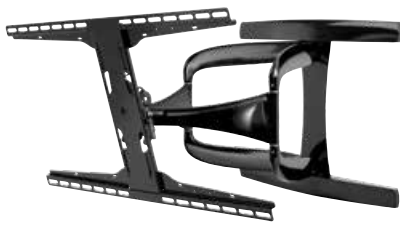
Creates an aesthetically appealing look

2. POST-INSTALLATION HEIGHT ADJUSTMENT

±0.5" (13mm) of vertical adjustment fine tunes positioning of display after installation

3. INTEGRATED CABLE MANAGEMENT

Protects, contains and conceals cables for a clean, professional installation



SUA771PU

Display Size
42" to 90" Ultra-thin displays
less than 3" (76mm) deep

Max Load
125lb (57kg)

Mounting Pattern
800 x 400mm
(31.50"W x 15.75"H)

Distance From Wall
1.85"-24.85" (47-631mm)

Tilt | Pivot | Roll
+15°/-5° | ±72.5° | ±5°

Metal Stud Accessory: WSP756
Security Accessory: ACC925

OSUA771PU

Display Size
55" to 77" OLED/QLED displays
less than 3" (76mm) deep

Max Load
125lb (57kg)

Mounting Pattern
400 x 400mm
(15.75"W x 15.75"H)

Distance From Wall
2.87"-25.87" (73-657mm)

Tilt | Pivot | Roll
+10°/-3° | ±72.5° | ±5°

Metal Stud Accessory: WSP756
Security Accessory: ACC925

IM771PU

Display Size
42" to 90" Ultra-thin displays
less than 3" (76mm) deep

Max Load
Articulating Mount: 125lb (57kg)
In-Wall Box: 25lb (11.3kg)

Mounting Pattern
800 x 400mm
(31.50"W x 15.75"H)

Distance From Wall
1.98"-24.98" (50-634mm)

Tilt | Pivot | Roll
+15°/-5° | ±90° | ±5°

IBMP In-wall Box
Component Panel

- Added ±5° of roll for post-installation display leveling without the use of tools

- Internal cable management provides clean, professional installation finish



- Landscape or portrait mounting options increases display versatility

- Unique arms and tool-less wall plate covers hide fasteners for an ultra clean look

- The I-Shaped Adaptor plate's innovative design helps avoid blocking connections on back of display



For over 80 years, passion and innovation continue to drive Peerless-AV forward. We proudly design and manufacture the highest quality products, including outdoor displays and TVs, dvLED and LCD video wall systems, complete integrated kiosks, professional carts and stands, and more. Whether a full-scale global deployment or high volume custom project, Peerless-AV develops meaningful relationships and delivers world-class service. In partnership with Peerless-AV, you are trusting an award-winning team of experts who will support your business every step of the way. For more information, visit peerless-av.com.

 peerless-av.com
 800-865-2112